

# Standard 5.8: Pulmonary Resection

## Operation

**For any primary pulmonary resection performed with curative intent**

*(including non-anatomic parenchymal-sparing resections)*

**Resect nodes from:**

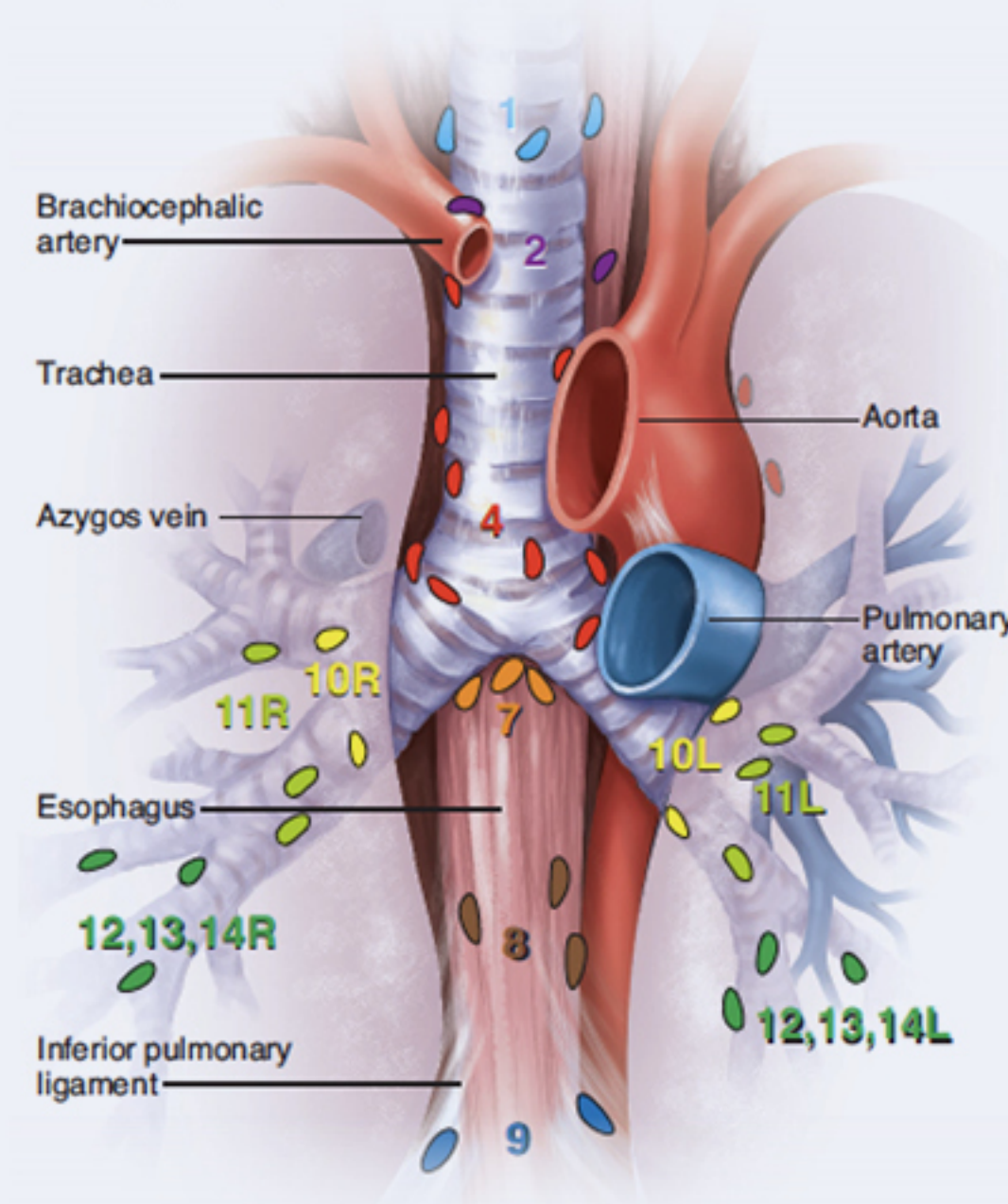


**Mediastinum**  
(Stations 2-9)  
≥3 distinct stations

**Hilum**  
(Stations 10-14)  
≥1 station

## Pathology Documentation

**Synoptic report documents lymph nodes from:**



≥ 3 mediastinal stations

≥ 1 hilar station

**with names and/or numbers of stations**

## When?

2021:  
**Implementation**

2024 site visits:

**80%**  
**Compliance**

Adapted from *Chest*, Vol. 111, Mountain CF, Dresler CM, Regional lymph node classification for lung cancer staging, Pp. 1718-1723, Copyright (1997), with permission from Elsevier.