

Trauma Education Newsletter

[Education Updates](#) | [CMS/LMS Help](#) | [Policy Reminder](#) | [What's New](#)

September 2024

REMINDERS

Plan for ACS System Outage in December

Due to a system outage from December 5 at 12:00 pm CT to December 9 at 9:00 am CT, the Trauma Education Course Management System (CMS) and ACS Learning Management System (LMS) will not be available during this time.

We strongly recommend that courses using the CMS and/or LMS not be offered from **December 2 to December 15**. Additional details regarding this outage will follow shortly. Contact traumaeducation@facs.org with any questions.

Submit a Proposal for the ATLS Global Symposium

The Advanced Trauma Life Support (ATLS) Global Symposium Planning Committee invites you to submit proposals for the 2025 Symposium, being held Friday, March 14–Sunday, March 16, 2025, in Chicago, Illinois. Proposals addressing “local and regional solutions for trauma education” will be prioritized. The deadline for online submission is **Monday, October 14, 2024** (11:59 pm CT).

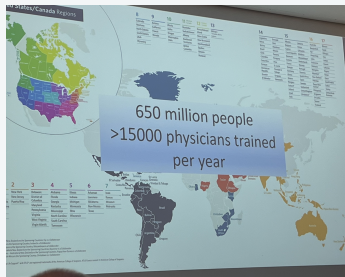
Additional detailed information for the **Global Symposium** will be available soon, with registration opening in early December. We hope to see many of you in Chicago for a productive and exciting meeting.

Submit Proposals

TRAUMA EDUCATION SPOTLIGHT

Region 15 2024 Meeting Was a Success

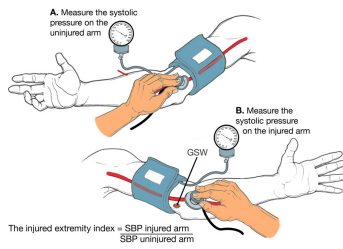
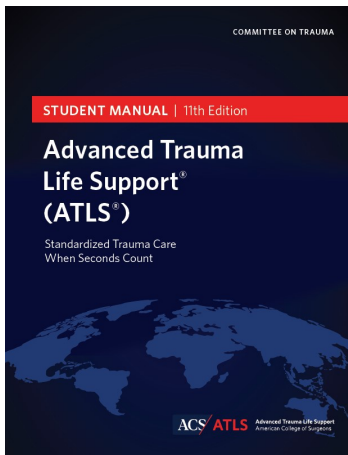
The ATLS European Association hosted its annual meeting in Prague from September 6–7, with more than 70 participants and 19 countries represented. Topics included: History of ATLS in the Czech Republic, regional challenges (and opportunities), Advanced Trauma Care for Nurses taught concurrently with ATLS, why the Resident Paper Competition is important, and lessons learned from a local mass shooting in December 2023. Thanks to those in Region 15 for modeling quality education, collaboration, and innovation!



EDUCATION UPDATES

ATLS 11th Revision Is in Final Stages

The ATLS Student Manual is in its final stage of development. Check out the new look and feel of the course, including the cover, a sample of a medical illustration, and new infographics.



OCULAR TRAUMA ASSESSMENT PRIORITIZED BY TIME	
DIAGNOSES 1-3 CAN OCCUR INDEPENDENTLY OF EACH OTHER	
<p>1</p> <p>CHEMICAL INQUIRY Did the patient have contact with any chemicals? Do the patients have a chemical injury? Do the patients have evidence of a chemical injury to the eye or periorbital area? Do the patients require immediate treatment?</p> <p>NEXT ASSESSMENT</p>	<p>TREATMENT</p> <p>Stop Chemical Injury Present Treatment of Chemical Injury</p> <p>Chemical injury present (Chemical injury) Stop of the eye or periorbital area. Call ophthalmology ASAP.</p>
<p>2</p> <p>COMPARTMENT SYNDROME Does the patient have evidence of a critical limb ischemia syndrome? Swelling, pain, numbness, tingling, or paralysis of the hand or foot. Pain out of proportion to the injury. Pallor, pulselessness, and paresthesia. Paralysis of the hand or foot.</p> <p>NEXT ASSESSMENT</p>	<p>TREATMENT</p> <p>Perform a fasciotomy and debride.</p> <p>Call the eye team if the patient has evidence of a critical limb ischemia syndrome. Call ophthalmology ASAP.</p>
<p>3</p> <p>OPEN GLOBE Is there a globe injury? Is there a globe injury? Is there a globe injury? Is there a globe injury? Is there a globe injury?</p> <p>NEXT ASSESSMENT</p>	<p>TREATMENT</p> <p>Put a rigid shield in place over the eye without pressure on the eye.</p> <p>Call the eye team if there is a globe injury. Call ophthalmology ASAP.</p>
DIAGNOSES 4-6 CAN OCCUR SIMULTANEOUSLY	
<p>4</p> <p>BLUNT TRAUMA TO THE GLOBE Is there a globe injury? Is there a globe injury? Is there a globe injury? Is there a globe injury? Is there a globe injury?</p> <p>TREATMENT</p> <p>Manage pain. Manage pain, nausea and vomiting. Call ophthalmology ASAP.</p>	<p>5</p> <p>ORBITAL FRACTURE(S) Is there a globe injury? Is there a globe injury? Is there a globe injury? Is there a globe injury? Is there a globe injury?</p> <p>TREATMENT</p> <p>Call ophthalmology ASAP.</p>
<p>6</p> <p>EYELID LACERATIONS Is there a globe injury? Is there a globe injury? Is there a globe injury? Is there a globe injury? Is there a globe injury?</p> <p>TREATMENT</p> <p>Stop fluids until well past green or yellow eye movement. Call ophthalmology.</p>	

Download the MyATLS App

The redesigned MyATLS app launched in August and already has been downloaded by more than 1,000 users. Content is being added to the app every 2 weeks on Trauma Tuesdays. This month, you can expect to see new quiz questions to help sharpen your ATLS knowledge, along with additional just-in-time videos demonstrating essential skills. The ATLS 10 MyATLS app is available in the Apple Store and Google Play for a one-time fee of \$9.99. Visit the [MyATLS App page](#) for additional information and direct links to the app in the app stores.

CMS/LMS HELP

Post-Course Reports Are Due 60 Days after Course Completion

Please remember to submit your post-course reports within 60 days of course completion. A delay in processing can affect your instructors' reverification status and your ability to submit new course requests. Keep in mind that Post Course Reports include five main components: faculty disclosures, financials, LMS allocations, schedules, and commercial support reconciliation (if applicable). Once all this information is entered into the CMS, submit the report, and it will be reviewed for approval. If you need assistance completing these reports or have questions, contact traumaeducation@facs.org.

POLICY REMINDER

Instructors Need Four Courses to Remain Verified

In order for ATLS Instructors to remain verified, they must teach a minimum of four courses within their 4-year verification cycle. The courses can be taught at different sites and include various educational components within the curriculum. Keep in mind that one

cannot “bank” courses or have any rollover into the next verification cycle. If you have any questions, email traumaeducation@facs.org.

WHAT'S NEW

APPs May Be Eligible to Become Associate Instructors

Beginning September 24, Advanced Practice Providers (APPs) may be eligible to serve as Associate Instructors and teach components of the ATLS course, under the supervision of an ATLS Course Director. The policy is located [here](#), the required Attestation Form is available [here](#), and a letter summarizing the process is [here](#).

New TAX Exempt Status Changes Are in Place

The ACS is now required by state law to levy the applicable sales tax rate for all taxable sales. This levy will only affect a handful of states (see below). If your organization is tax-exempt, send a copy of your tax exemption certificate to traumaeducation@facs.org so that all taxes can be removed before an invoice is submitted.

The College collects and remits sales taxes for the following US states/jurisdictions: Arizona, California, Colorado, District of Columbia (DC), Illinois, Indiana, Kentucky, Maryland, Massachusetts, Michigan, Ohio, Oklahoma, Pennsylvania, Tennessee, Texas, Wisconsin, and soon, West Virginia.

Contact traumaeducation@facs.org for further information.

Take Advantage of New Order Form for Trauma Education Resources

Our team has developed a new order form to streamline the purchase of Trauma Education resources. The ACS CMS is always the preferred method of course procurement, and the order form should only be used for:

- Course sites that don't presently use the CMS to place orders for course learner registration passes
- Procurement of course resources for courses that are not currently available in the CMS
- Purchase of a single order of 100 or more course learner registration passes at one time

- Bulk ordering of Disaster Management and Emergency Preparedness, Advanced Disaster Medical Response, and Traumatic Brain Injury (online courses)

Be sure to complete the order form in its entirety, and once finalized, send the document to traumaeducation@facs.org for processing. Once the order form is received, our team will reach out with any questions. Contact traumaeducation@facs.org if you need a copy of the order form.

TELL US MORE

*The Trauma Education Team is here to support you in offering quality educational programs. **Share ideas** for future newsletter topics, and contact traumaeducation@facs.org with questions.*



THE HOUSE OF SURGERY™

American College of Surgeons

633 N. Saint Clair St., Chicago, IL 60611 | facs.org

p: 312-202-5000 | traumaeducation@facs.org

[Update Your Preferences](#)