

CoC Member Organization Representatives Meeting

April 9, 2024

2024 CoC Member Organization Survey

- Survey open January 8 to February 26, 2024
- 41 of 63 CoC Member Organization Representatives responded
- Questions
 - Top 2 to 3 organizational priorities for 2024
 - How can the CoC assist?
 - Top 2 to 3 legislative priorities for 2024
 - How can the CoC assist?
 - Comments/Questions/Suggestions

2024 CoC Member Organization Survey

Q4 What are your organization's top 2-3 priorities for the upcoming year?

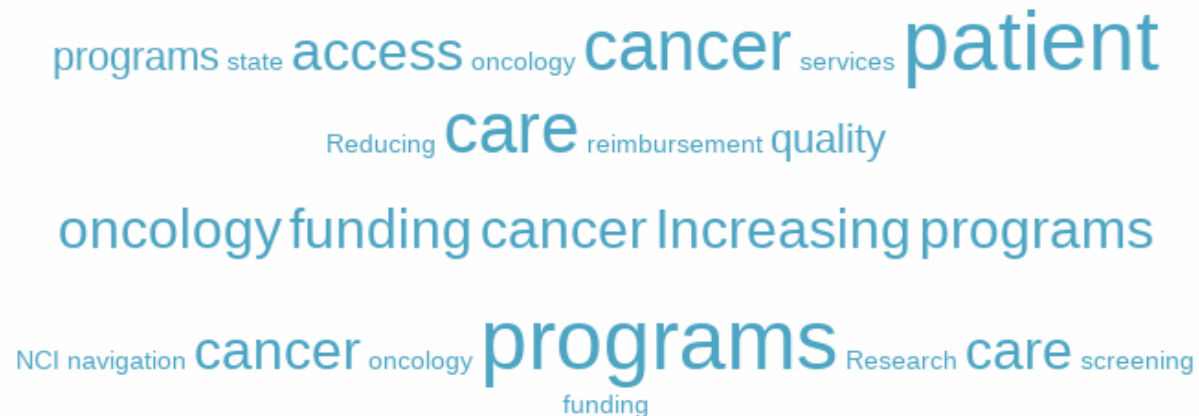


A word cloud of responses to the survey question. The words are arranged in several horizontal lines, with varying font sizes and colors (shades of blue and teal). The most prominent words are 'oncology', 'cancer', 'care', 'patients', 'quality', 'support', 'education', 'engagement', 'resources', 'professional', 'increased', 'use', 'clinical', 'community', 'standards', 'research', 'breast', 'community', 'equity', 'clinical', 'help', 'practices', 'service', 'educational', 'programs', 'address', 'cancer', 'care', 'professional', 'diverse', 'include', 'patients', 'advancing', 'continue', 'programs', 'access', 'planning', 'practice', 'standard', 'member', 'ensure', 'enhance', 'cancer', 'use', 'continuing', 'education', 'care', 'patients', 'clinical', 'oncology', 'national', 'therapy', 'around'.

standards exercise access Health research breast patients community
care Equity oncology Clinical cancer Help quality practices
cancer care service educational programs
address cancer care care Professional diverse include cancer patients
oncology Advancing Continue programs access planning
practice standard member
resources ensure professional Enhance Increased Cancer use
continuing education care support patients clinical oncology
community national engagement therapy around

2024 CoC Member Organization Survey

Q6 What are your organizations top 2-3 advocacy priorities in 2024 (if not already included in question 3)?



A word cloud of advocacy priorities for 2024. The words are arranged in a circular pattern. The most prominent words are 'patient', 'cancer', 'programs', 'care', 'oncology', 'funding', 'increasing', 'services', 'access', 'quality', 'reimbursement', 'reducing', 'research', 'screening', 'navigation', and 'state'. The words are in various shades of blue and teal.

programs state access oncology cancer services patient
Reducing care reimbursement quality
oncology funding cancer Increasing programs
NCI navigation cancer oncology programs Research care screening
funding

American Academy of Hospice and Palliative Medicine (AAHPM)

Myrick C. Shinall Jr., MD, PhD, FACS

Oncology Nursing Society (ONS)

Erica Fischer-Carlidge, DNP, CNS, AOCNS, EBP (CH)





AMERICAN ACADEMY OF
HOSPICE AND PALLIATIVE MEDICINE

CoC Member Organization Update
Myrick C. Shinall, Jr., MD, PhD, FACS



About

- Professional organization for physicians specializing in hospice and palliative medicine, nurses, and other healthcare providers
- Founded in 1988
- 5,500 members
- Co-sponsors the Annual Assembly of Hospice and Palliative Care along with the Hospice and Palliative Nurses Association
- Patient website: palliativedoctors.org



AMERICAN ACADEMY OF
HOSPICE AND PALLIATIVE MEDICINE

Definitions

- **Palliative care** focuses on improving a patient's quality of life by managing pain and other distressing symptoms of a serious illness. Palliative care should be provided along with other medical treatments.
- **Hospice** is palliative care for patients in their last year of life. Hospice care can be provided in patients' homes, hospice centers, hospitals, long-term care facilities, or wherever a patient resides.
- Physicians who specialize in **hospice and palliative medicine** work with other doctors and healthcare professionals, listen to patients and align their treatments with what's important to them, and help families navigate the complex healthcare system.



Strategic Plan 2020-2024

- Expand and Enhance Engagement within Palliative Care Community
- Build and Sustain a Diverse Workforce
- Engage, Develop and Sustain Expertise
- Promote Quality of Care, Research, and Translation of Evidence into Practice
- Advance Health Policy and Advocacy



Strategic Plan 2020-2024

- Expand and Enhance Engagement within Palliative Care Community
- Build and Sustain a Diverse Workforce
- Engage, Develop and Sustain Expertise
- Promote Quality of Care, Research, and Translation of Evidence into Practice
- **Advance Health Policy and Advocacy**



Advance Health Policy and Advocacy

- Expand and sustain AAHPM's role among patients and families, the media, policymakers, payers, providers, and stakeholders
- Advocate for health policy that recognizes and supports the needs of patients with serious illness, their caregivers, and the health professionals who care for them, including the unique role of hospice and palliative medicine physicians
- **Advance policy priorities through strategic partnerships with other stakeholders, medical societies and healthcare organizations**
- Promote and sustain integration of palliative care in current and evolving payment and delivery models

CoC Standard 4.5

Each calendar year, the cancer program fulfills all of the compliance criteria:

1. Palliative care services are available to cancer patients either on-site or by referral.
2. A policy and procedure is in place regarding palliative care services that includes all required elements.
3. The process for providing and referring palliative care services to cancer patients is monitored and evaluated. A report is given to the cancer committee, contains all required elements, and is documented in the cancer committee minutes

The Oncology Nursing Enterprise

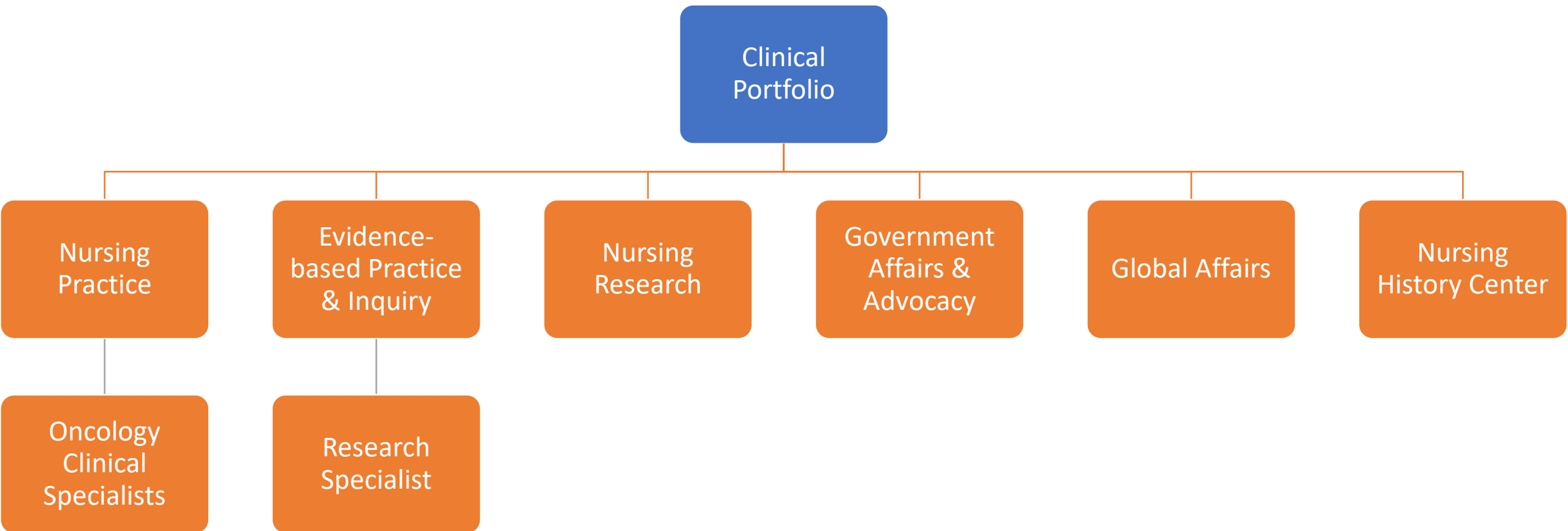
Erica Fischer-Carlidge, DNP, RN, AOCNS, EBP(CH)

Chief Clinical Officer

Efischer-cartlidge@ons.org

The Oncology Nursing Enterprise







Clinical Priority Development

- Trending/Tracking oncology-related healthcare news
- Member feedback
- Clinical Immersions
- Community discussions
- Stack-Rank activity
- Current state evaluation of resources

2023-2025 Priorities



- Equitable and Inclusive Care
- Expansion of oncology care to non-oncology nurses
- Respond to the rapid growth of the oncology drug pipeline
- Navigation
- Radiation Oncology
- Adolescent and Young Adult (AYA) Cancer Care
- Interventional Oncology
- Tele-Oncology

Administration Considerations

Diversity, Equity, and Inclusion

Hazardous Drug Safety for Ancillary Staff

Nurse Wellness

Oncologic Emergencies

Palliative Care

Prevention, Screening, and Diagnosis

Psychological Dimensions of Care

Scopes and Standards of Practice

Survivorship

Treatment Modalities



HUDDLE CARD IMMUNOTHERAPY

Approach

Immunotherapy harnesses the immune system's innate ability to recognize a target. For example, certain cancers avoid destruction by the immune system by having a surface that turns off immune cell function. Immunotherapy can block these pathways, giving the immune system a chance to respond. Some types of immunotherapies have been shown to have a response so if the tumor is dormant for a period or the patient relapses, they know how to respond.

Examples

Checkpoint inhibitors, monoclonal antibodies, adoptive cell transfer

Benefits

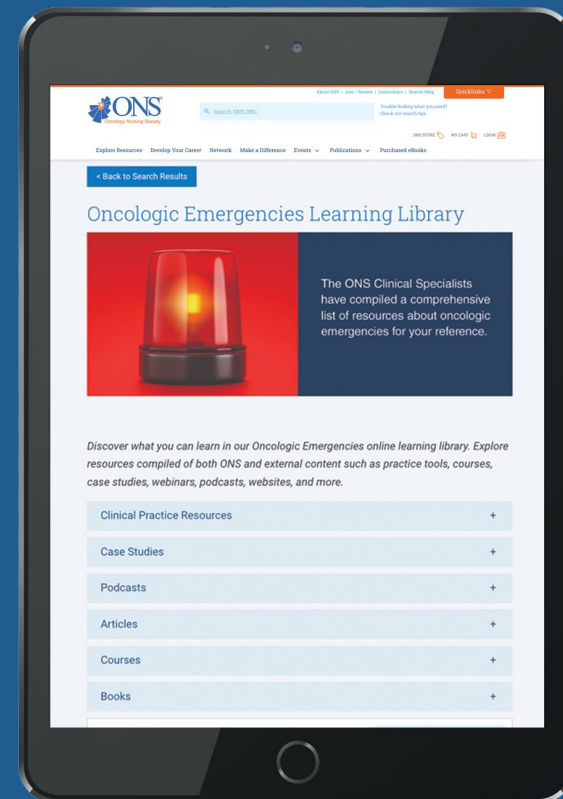
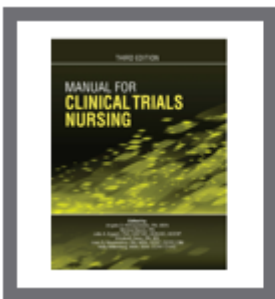
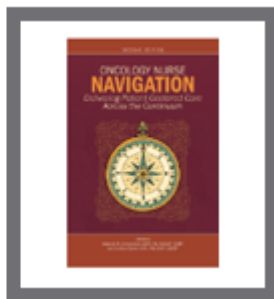
- Immunologic memory can prevent recurrence
- May have fewer acute, dose-dependent side effects, compared to standard chemotherapy
- May be used in combination with other therapies
- Often has durable responses

Limitations

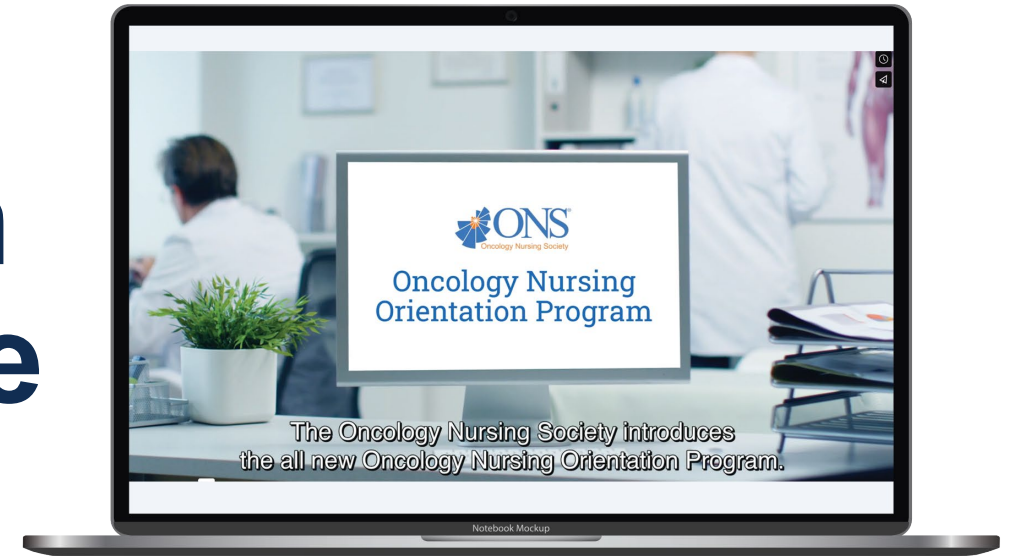
- Requires a working immune system
- May take longer to see effects



Clinical Resource Offerings



Onboard New Oncology Nurses With ONS's Oncology Nurse Orientation Program



As an NCI Comprehensive Cancer Medical Center, we have a need for nurses to have an **in-depth knowledge** of oncology patients. The ONS Oncology Nurse Orientation Program was the **perfect curriculum builder** for us! It allows us to standardize the **foundation content** that we then wrap around our medical center specific content.

-Chris Tarver, DNP, RN, CNS, NEA-BC, EBP(CH), Executive Director
Professional Practice and Nursing Excellence Clinical Practice Education and
Professional Development, City of Hope



- An evidence-based course that incorporates ONS standards and guidelines
- Receive 29.75 NCPD contact hours
- Access ONS's preceptor bundle in alignment with the facility's orientation plan

Biomarker Database And Precision Oncology Resources

- Over 300 biomarkers and over 20 disease sites
- Library including robust educational content and point of care tools

ONS | Biomarker Database

Welcome! Learn more about our resources.

Curated for oncology nurses and other members of the care team. Bookmark this page.

Learn More

Search by biomarker or therapy.

Search

Refine by:

- Biomarkers
- Cancer Types
- Targeted Therapies

PIK3CA Breast Cancer

Updated 01/16/2024

PIK3CA is the gene that encodes for a protein in PI3Ks, which are kinases that have a critical role in cell growth, proliferation, and metabolism via the PI3K/Akt/mTOR signaling pathway [1].

If you want to see all biomarkers associated with Breast Cancer, [click here](#).

Implications for Patient Care

PIK3CA is a **predictive biomarker**. Patients with HER2-negative metastatic breast cancer who test positive for *PIK3CA* pathogenic variants are eligible for treatment with alpelisib and fulvestrant [2].

Targeted Therapies

[Alpelisib \(Piqray®\)](#)

Kinase inhibitor

Indicated in combination with fulvestrant for the treatment of postmenopausal women and adult men with HR-positive, HER2-negative, *PIK3CA*-altered, advanced or metastatic breast cancer as detected by an FDA-approved test following progression while taking or after receiving an endocrine-based regimen [2,3].

[Patient Education](#)

[Capivasertib \(Trugap®\)](#)

Kinase inhibitor

Indicated in combination with fulvestrant for the treatment of adult patients with hormone receptor (HR)-positive, human epidermal growth factor receptor 2 (HER2)-negative, locally advanced or metastatic breast cancer with one or more *PIK3CA/AKT1/PTEN*-alteration as detected by an FDA-approved test following progression on at least one endocrine-based regimen in the metastatic setting or recurrence on or within 12 months of completing adjuvant therapy [4].

Testing

Testing is indicated for patients with recurrent/stage IV disease that is HER2-negative [2].

A tissue or blood sample is needed for analysis. Testing technologies that may be used include [PCR](#) or [NGS](#) [5].

Additional Considerations

Studies suggest that 28% of HR-positive, HER2-negative breast tumors and 10% of triple-negative breast tumors harbor pathogenic variants in *PIK3CA* [1].

[Clinical trials for breast cancer and PIK3CA](#)

Evidence-based Practice & Inquiry

Likely to Be Effective
Cognitive Training

Effectiveness Not Established
Acupuncture/Electroacupuncture
Body-Mind-Spirit Therapy/Qigong
Cognitive Behavioral Interventions/Approach
Donepezil
EEG Biofeedback
Exercise
Guided Imagery/Imagery
Meditation
Melatonin
Memantine
Methylphenidate
Mindfulness-Based Stress Reduction
Modafinil/Armodafinil
Multicomponent Rehabilitative Intervention
Natural Environment Intervention
Psychoeducation/Psychoeducational Interventions
Sertraline
Vitamin E
Yoga

Effectiveness Unlikely
Ginkgo Biloba

Not Recommended for Practice
Erythropoiesis Stimulating Factors (ESA)

Symptom Intervention (PEP)

ONS Guidelines™
Published ONS Guidelines™:
ONS Guidelines™ to Support Patient Adherence to Oral Anticancer Medications
ONS Guidelines™ for Cancer Treatment–Related Hot Flashes
ONS Guideline™ for the Management of Cancer Treatment-related Lymphedema
ONS Guideline™ for Cancer Treatment-related Skin Toxicity
ONS Guidelines™ for Opioid-Induced and Non-Opioid-Related Cancer Constipation
ONS Guidelines™ for Cancer Treatment-Related Radiodermatitis

Endorsed Guidelines	Question? cclark@ons.org
Endorsed Guidelines	
<ul style="list-style-type: none">Guidelines will be added as they are designated as Endorsed.	
Affirmation of Value Guidelines	
<ul style="list-style-type: none">Guidelines will be added as they are assigned Affirmation of Value.	
Refer to the ONS Guidelines Endorsement Program section for more information.	

Endorsement Program Launches Pilot

2024-2027 Research Priorities



Advance patient centric, precision symptom science



Provide evidence for safe and effective cancer care delivery models and support of the cancer-nursing workforce.



Describe the impact of the environment on cancer care outcomes.



Integrate patient navigation into cancer care across the trajectory.



Advance the use of innovative methodologies in oncology nursing research

Global Engagement



Palliative Care programming at Sarawak General Hospital in Kuching, Malaysia with ASCO International Cancer Corps (November 2023)

Post-Graduate Institute for Medical Education and Research (PGIMER) Chandigarh, India (December 2023)

Joint position statement on Fertility preservation with CANO and APHON

March 2024 - Oncology nursing program in Bali, Indonesia at Asia-Pacific Breast Cancer Summit

Upcoming in 2024

Bolivia

Dubai, UAE

Oncology Nursing Society and City Cancer Challenge Foundation Collaborate to Improve Access to Quality Cancer Care Around the World

November 16, 2023

PITTSBURGH, PA—November 16, 2023—The Oncology Nursing Society (ONS) engaged in a new collaboration with City Cancer Challenge Foundation (C/CAN) that will transform and improve access to quality cancer care at the local, regional, and global levels. The two organizations signed a collaborative agreement in October 2023 to support and sustain their joint work.

"I am looking forward to what ONS and C/CAN will achieve with this new collaboration," ONS Chief Clinical Officer Erica Fischer-Carlidge, DNP, CNS, AOCNS[®], EBP-C, said. "Many of our members have a passion for sharing their experience and expertise with nurses in other countries that are committed to improving patient outcomes. We expect there will be bidirectional learning and growth

External Relationships



PASSION FOR PATIENTS



Government Affairs and Advocacy

Patient Access to Quality Cancer Care

Cancer Prevention

Research

Nurse Education

Telehealth

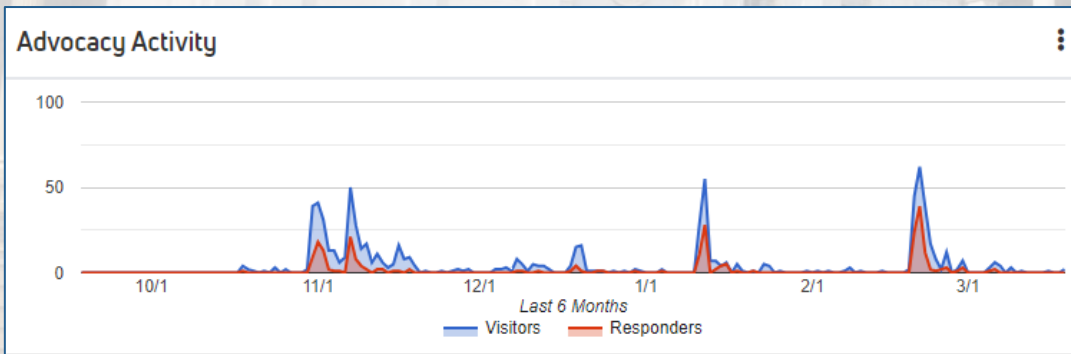
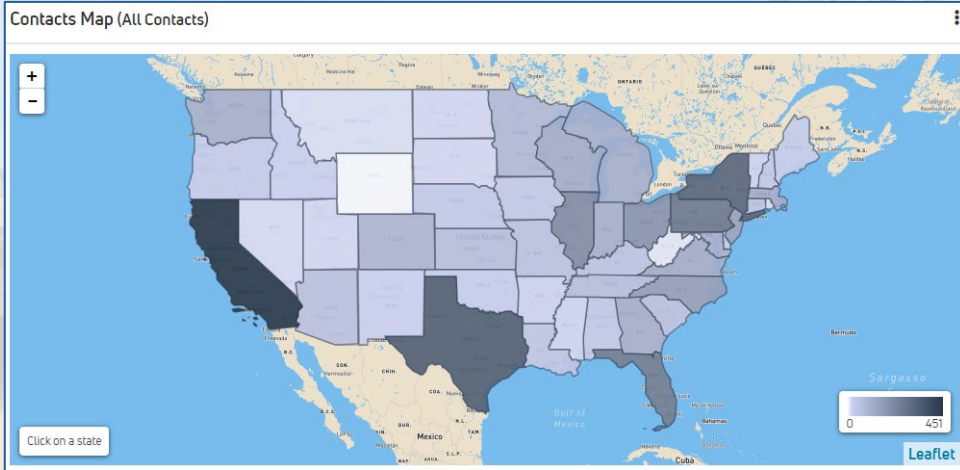
Oncology Nurse Workforce Safety & Well-being

Scope of Practice

Value of Oncology Nurses

Grassroots Activation

- Advocacy campaigns
- Broadcast messaging
- Data tracking/engagement metrics



49TH ANNUAL
IONS
Congress



IGNITE *the*
EXTRAORDINARY

APRIL 24–28, 2024 • WASHINGTON, DC

Register Now

Open Forum





CoC

Commission on Cancer
American College of Surgeons

Thank you!

Staff Liaisons:

Melissa Leeb at mleeb@facs.org

Rebecca Medina at rmedina@facs.org