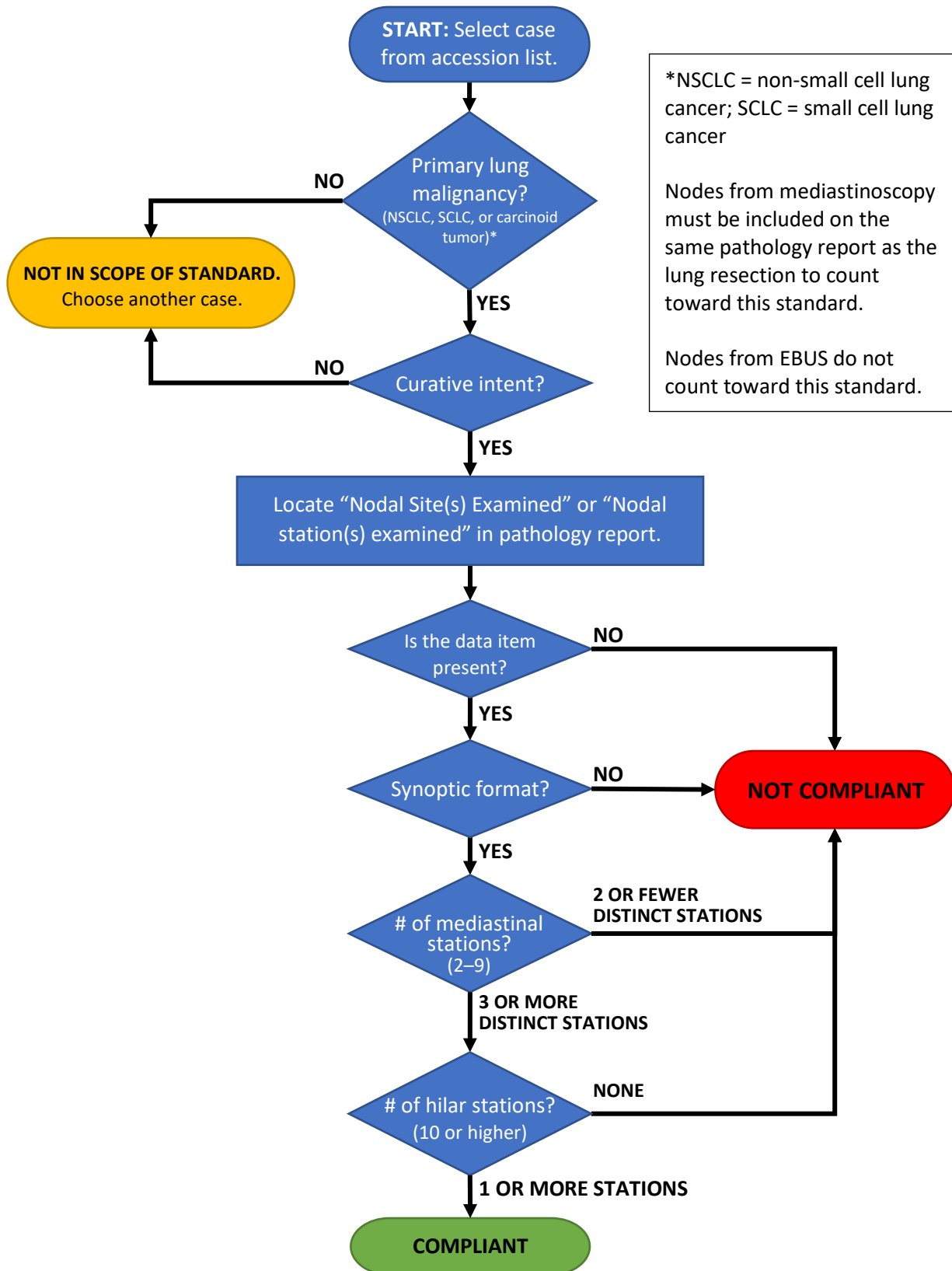


Flowchart to Assess Compliance with CoC Standard 5.8 (Pulmonary Resection)



*NSCLC = non-small cell lung cancer; SCLC = small cell lung cancer

Nodes from mediastinoscopy must be included on the same pathology report as the lung resection to count toward this standard.

Nodes from EBUS do not count toward this standard.

Repeat until you have assessed 7 cases or all eligible cases from the program.