

Teams Based Quality Improvement – 4R Quality Model to Improve Timely Molecular Testing and Treatment of Patients with Metastatic Lung Cancer

Raymond Liu, MD
 Medical Director
 Kaiser Permanente San Francisco, Cancer Center
 San Francisco, CA

1

Disclosures

- Research Grants to institution: Genentech (4R), AstraZeneca, BeiGene, Biotheranostics, Exact Sciences
- Participation in real world evidence think tank: Pfizer

2

Setting and methods

<p>Kaiser Permanente Nor Cal</p> <ul style="list-style-type: none"> • 4.5 million members • 21 cancer centers, CoC accredited • Mixed generalist, sub-specialization model, access to primary care • Commercial, Health Exchange, Medicare, MediCal • Large community population, both rural and urban • New fellowship program in SF 	<p>4R Oncology® Model (4R = Right Info / Care / Patient / Time)</p> <ul style="list-style-type: none"> • Guideline based Care Sequences® - innovative care plans • Tested in national settings • 4R approach: <ul style="list-style-type: none"> • Build Teams using 4R methods • Implement Care Sequences • Optimize timing / sequence of care delivery using 4R methods • PDSA cycles: update Care Sequences and care delivery
--	--

Liu R, Washin C, Liewicki S, et al. Pathways to High-Performing Team in Cancer Care using the 4R oncology model: assessment in a large health system and a blueprint for other institutions. JCO Oncol Pract. 2022;18(11):1204-1217. doi:10.1200/JOP.22.00287

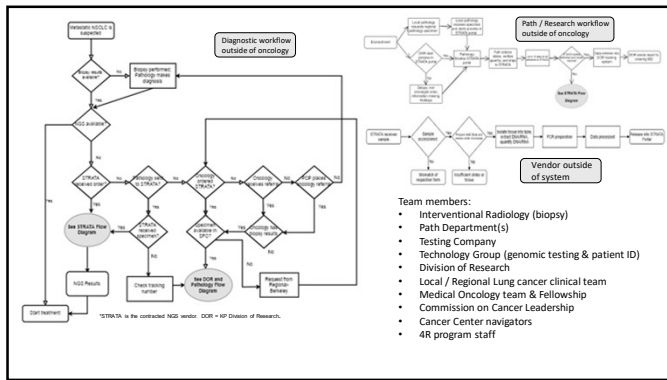
3

Problem & Aim Statement

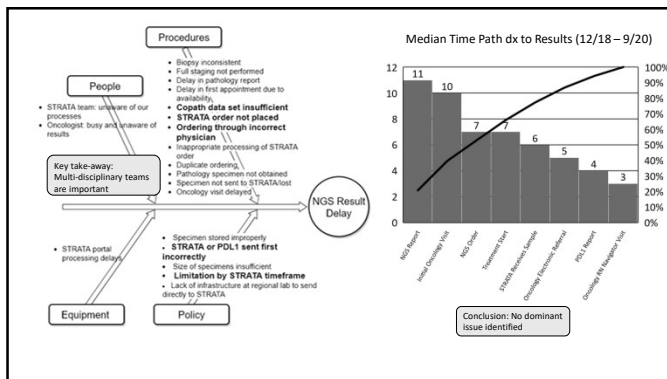
Problem: There were delays from diagnosis to next generation sequencing (NGS) results in patients with metastatic non-small cell lung cancer (NSCLC). At our institution, it took a median of 24 days for patients with a pathological diagnosis to receive results of NGS, compared to 15 days recommended by ASCO. Delays in NGS results can lead to: Increased patient fear and anxiety, Inappropriate use of front-line therapies, Increased mortality.

Aim: By June 1, 2021, we aim to reduce time from pathological diagnosis to NGS results for newly diagnosed patients with metastatic non-small cell lung cancer by 5 days, reducing time to NGS results to 19 days.

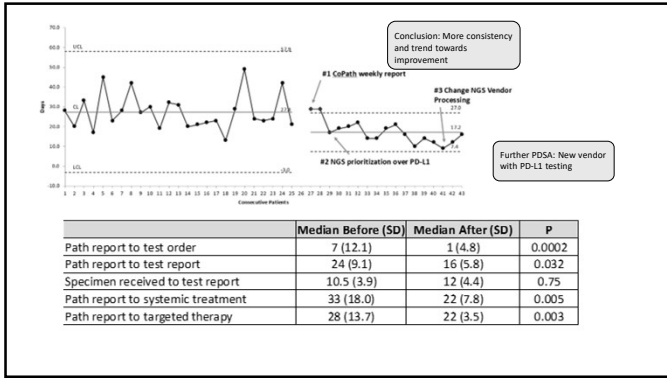
4



5



6



7

Learnings

Opportunities

- CoC administrative support
- 4R research grant
- Physician run organization
- New fellowship program

Challenges

- Hand-offs / multiple small processes problematic
- Processes outside of local control
- Balancing measures
- Data
- Timelines to complete project
- Sustainability

8

Key Takeaways

- Build a strong team early
- Don't jump to solutions
- Use existing processes (eg, 4R and PDSA) to gain sustainability

References:
 *Liu R, Weidner C, Lindein E, et al. Fostering a high-functioning team in cancer care using the 4R oncology model: assessment in a large health system and a blueprint for other institutions. *JCO Oncol Pract*. 2022;18(1):12-21. doi:10.1200/JCO.2020.8397.
 *Osowski B, Liu R. Improving Time to Molecular Testing Results in Patients with Newly Diagnosed, Metastatic Non-Small-Cell Lung Cancer. *2022;18(11)*. doi:10.1200/JCO.2020.8398.
 *Troisman J, Weidner C, Rappin B, et al. Evaluation of the novel 4R oncology care planning model in breast cancer: impact on patient self-management and care delivery in early-stage and non-surgery-related cancers. *JCO Oncol Pract*. 2021;17(9):1223-1234. doi:10.1200/JCO.2020.8399.
 *Troisman JR, et al. The Impact of 4R Oncology Model on Patient Self-Management and Satisfaction in Lung versus Breast Cancer. *J Clin Oncol*. 41, 2023 (suppl 16; abstr 51570).
 *Troisman JR, et al. Does the 4R oncology model improve clinicians' effectiveness in patient-facing planning of complex cancer care? *J Clin Oncol*. 40, 2022 (suppl 28; abstr 344).
 *Wu J, Weidner C, Troisman J, et al. The impact of the 4R Oncology model on OncotypeDX turnaround time. *J Clin Oncol*. 2023;41(16):531. doi:10.1200/JCO.2023.41.16.531

9

Thank you
